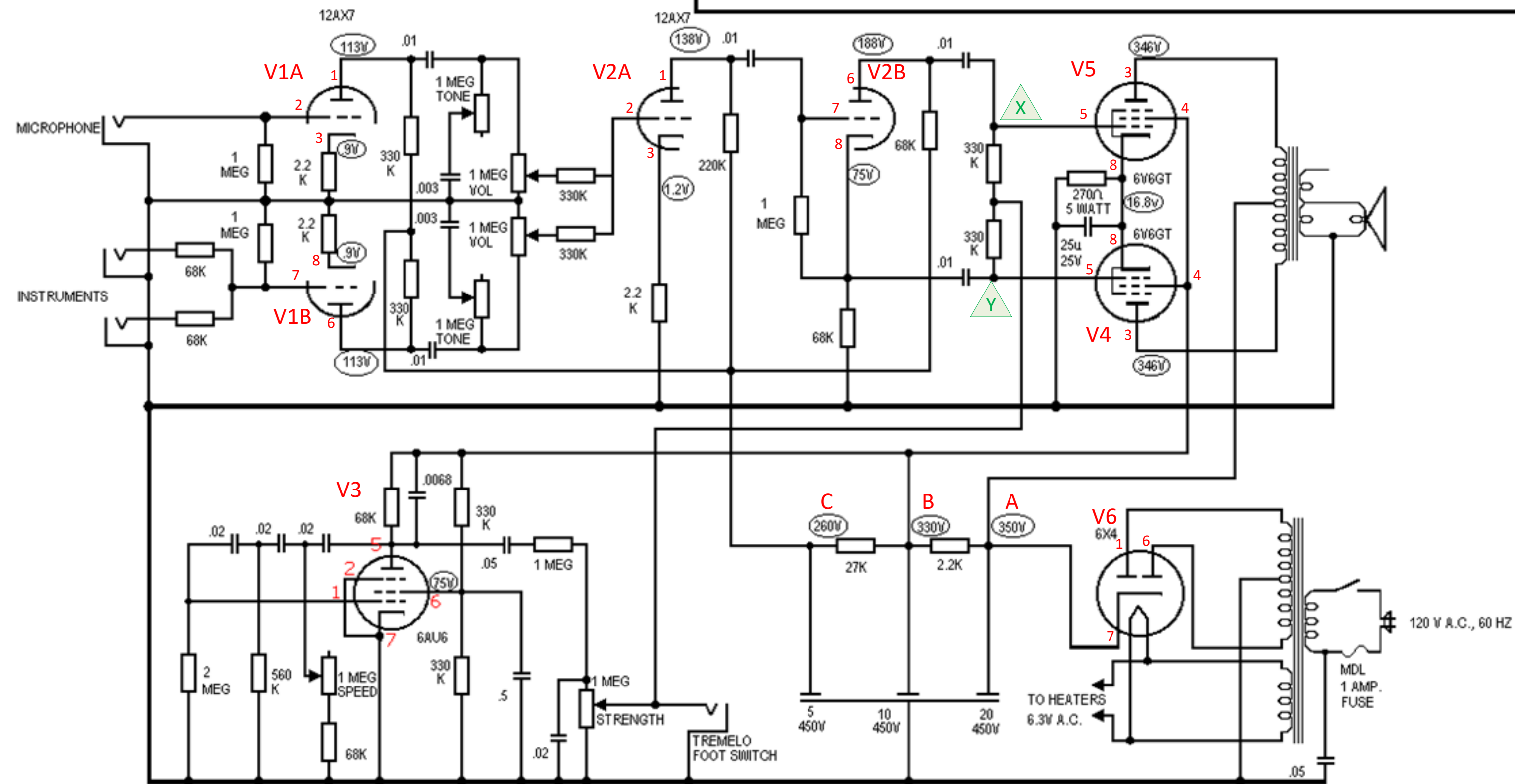
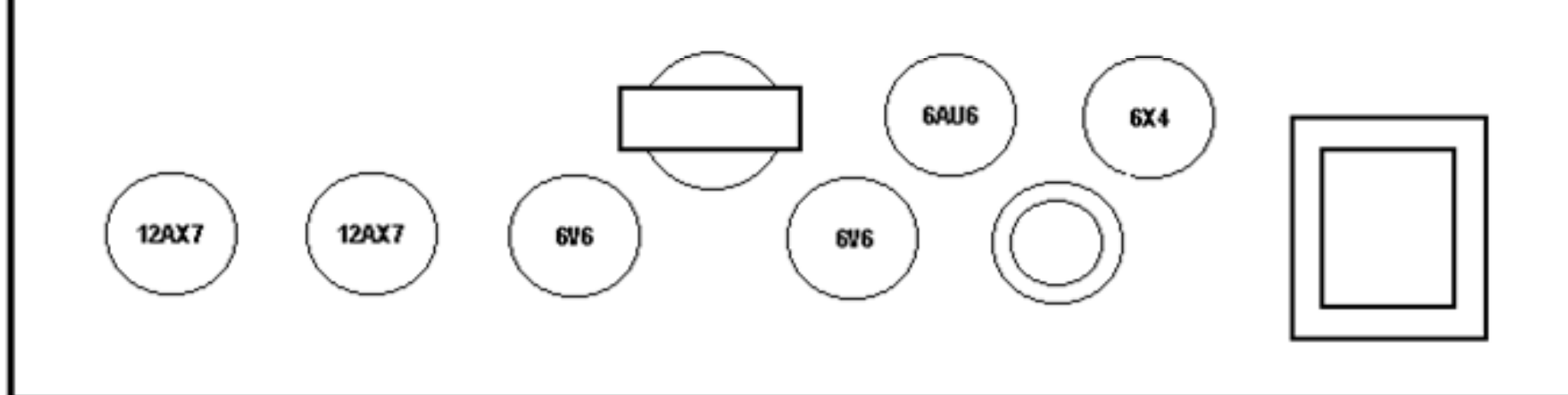
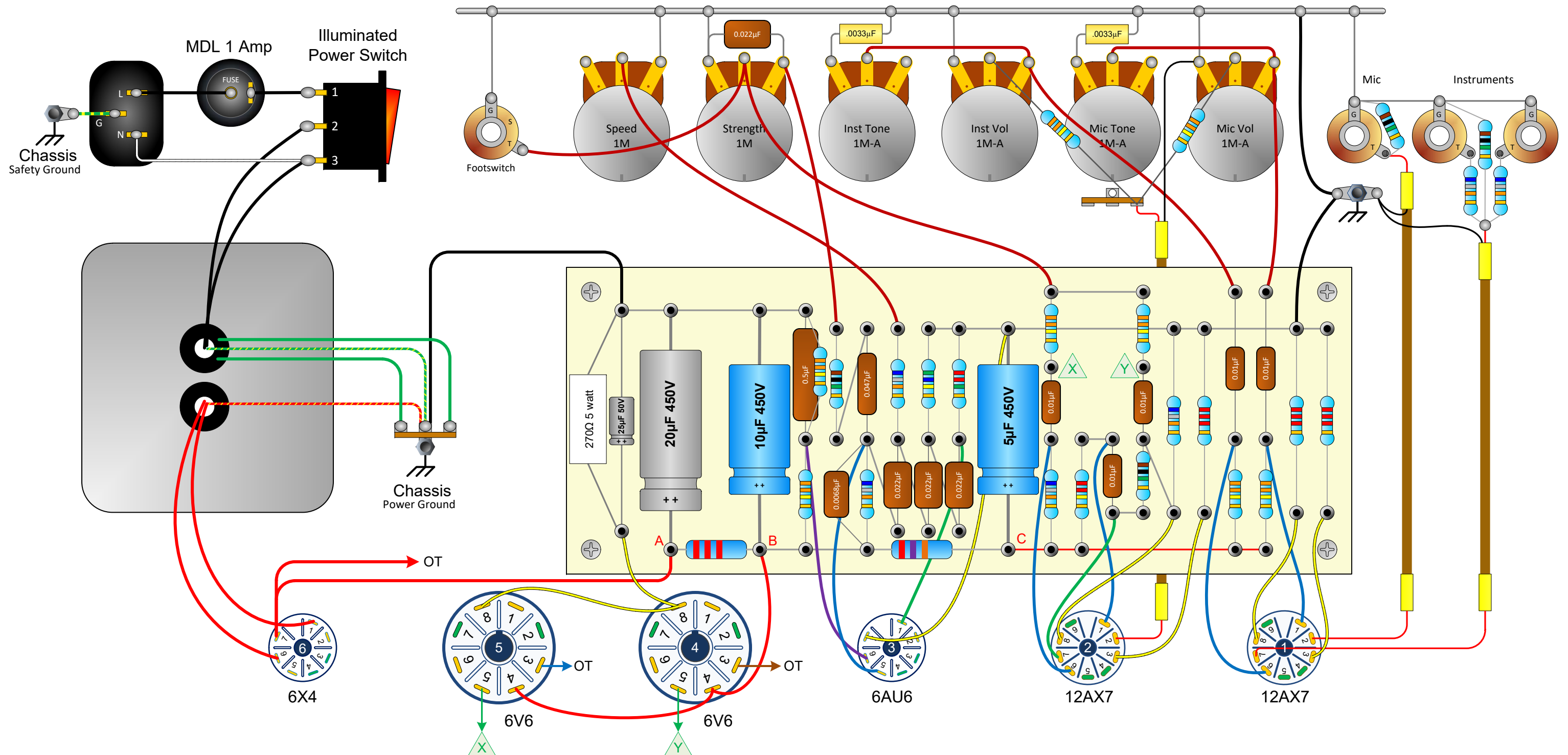


3. VOLTAGES MEASURED FROM POINTS INDICATED TO CHASSIS WITH 20,000 OHM/VOLT METER.



Silvertone Model 1482

Drawn by sluckey
08/25/2017



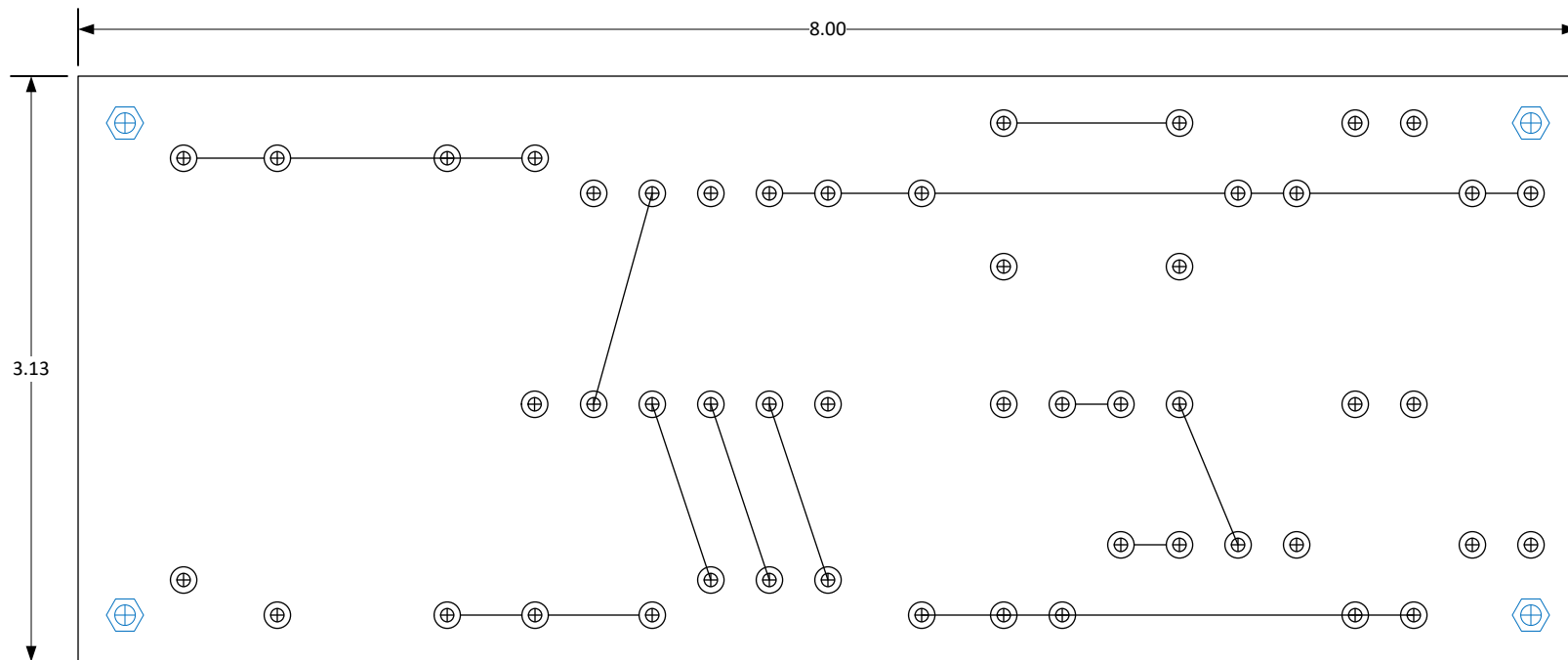
DRILL GUIDE

INSTRUCTIONS FOR PRINTING DRILL GUIDE

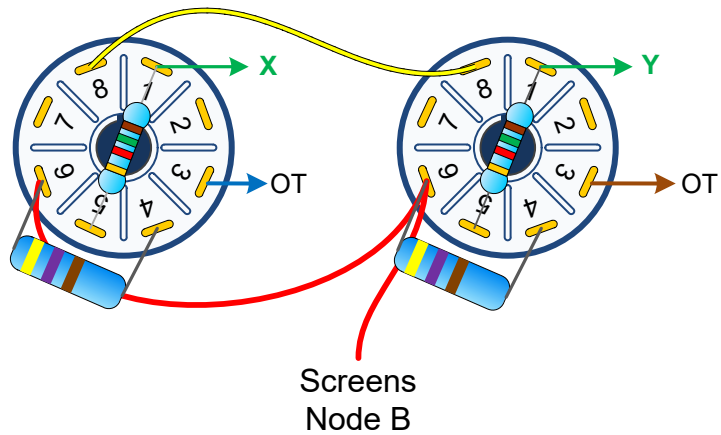
- ⊕ Turret --- drill size is 3/32"
- ⊕ Standoff – drill size to fit
- ⊕ Hole for wire pass thru – drill size to fit
- Dashed lines are underboard jumpers

NOTE... This drawing contains layers. Turn off any layers that you don't want to print.

Board size is 3 1/8" X 8". Print this drill guide FULL SIZE on letter sized paper. Measure the board length of the printout to verify it is 8". Attach to blank board using double sided carpet tape. Use a center punch to put a mark at the cross hairs of each turret, standoff, and hole. Use a 3/32" drill bit to drill all holes. Then enlarge holes as needed for screws and wire pass thru.



This mod adds grid stopper resistors and screen resistors directly on the sockets, ala Fender style.



This mod replaces two lug jacks with switching jacks for improved operation. The instrument jacks have been rewired as typical Fender style high/low jacks. A grid stopper resistor has been added at the tube socket for the Mic channel.

